



## PLUGPVMCSH10

**Descrizione:** plenum di distribuzione multidirezionale realizzato in lamiera zincata con isolamento fonoassorbente interno.

**Description:** multidirectional distribution plenum made of galvanized sheet with internal acoustic insulation.



**PLUGPVMCSH10**

10 attacchi diametro 75/90 completo di serranda di taratura con comando esterno a leva (PLUG)  
10 spigots diameter 75/90 complete of calibration damper with external level control (PLUG)



+ 3 tappi di chiusura  
+ 3 sealing caps



**TVMSOPVMCSH10**

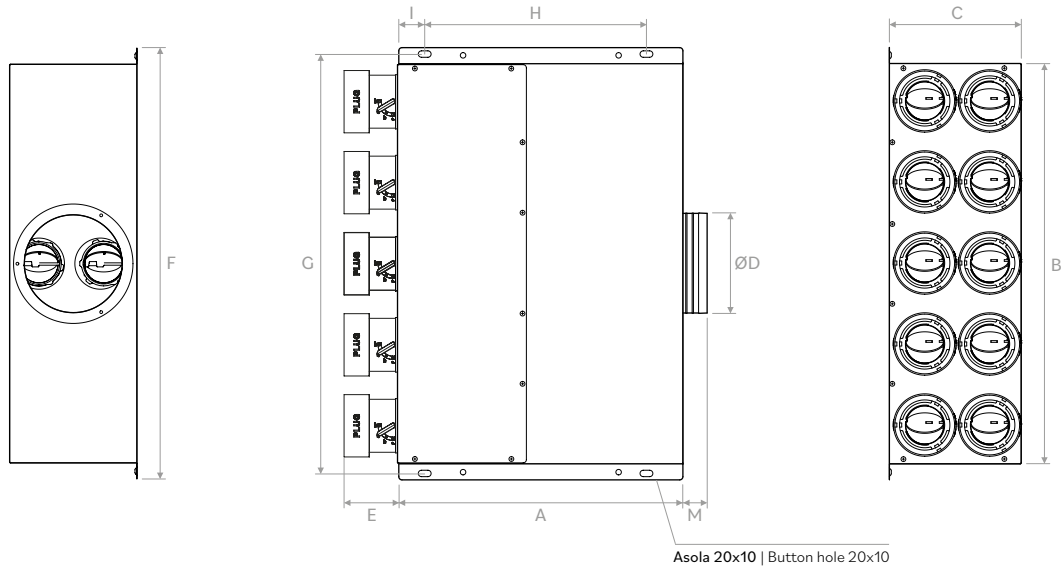
10 attacchi TVMGX per tubo ovale 102x50mm  
10 spigots TVMGX for oval hose 102x50mm



+ 3 tappi di chiusura  
+ 3 sealing caps

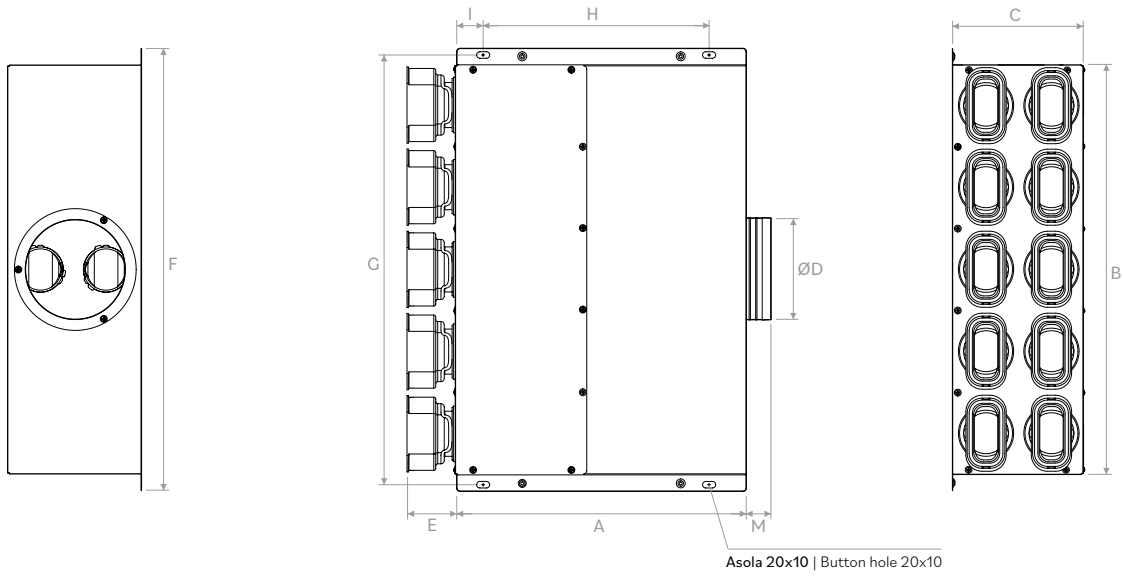


**PLUGPVMCSH10**



	A	B	C	ØD	E	F	G	H	I	M
mm	442	624	202	156	83,5	674	654	345	40	38

**TVMSOPVMCSH10**



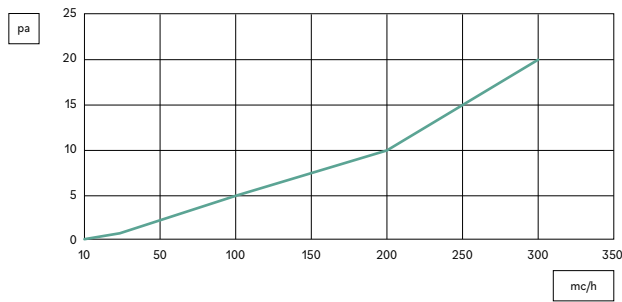
	A	B	C	ØD	E	F	G	H	I	M
mm	442	624	202	155	75	674	654	345	40	38



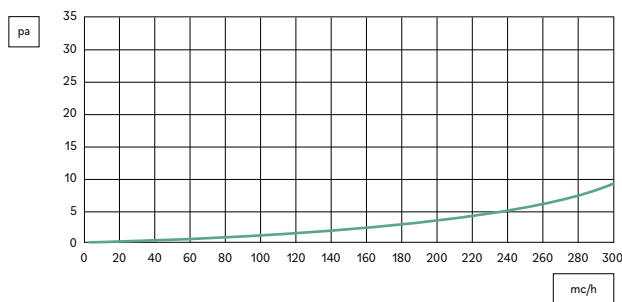
# PLUGPVMCSH10

## PERDITE DI CARICO | PRESSURE DROP

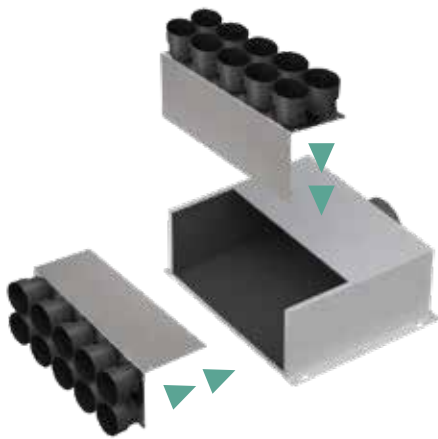
PLUGPVMCSH10 ATTACCHI LATERALI | SIDE SPIGOTS



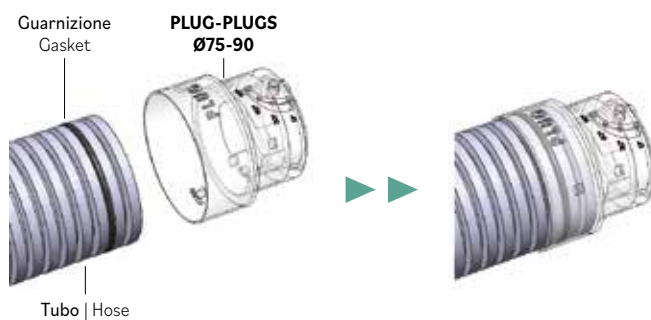
PLUGPVMCSH10 ATTACCHI POSTERIORI | REAR SPIGOTS



## APPLICAZIONI | APPLICATIONS



Possibilità di variare posizione immissione aria (frontale / superiore) in cantiere.  
 Valido sia per PLUGPVMCSH610 che per TVMSOPVMCSH10.  
 Possibility of changing air supply position (front / upper) on site.  
 Valid for both PLUGPVMCSH10 and TVMSOPVMCSH10.



## PREZZI | PRICES

---

Modello   Model	€
<b>PLUGPVMCSH10</b>	-
<b>TVMSOPVMCSH10</b>	-
<b>PLUGPVMCSH10I*</b> Dimensioni   Sizes pag. 215	-
<b>TVMSOPVMCSH10I*</b>	-

\* Versione completa con ionizzatore IONIC | Version complete with IONIC ionizer

