

LG COMMERCIAL TV

INFORMATION DISPLAY AND SOLUTIONS



Download
LG C-Display+
Mobile App
Google Play Store

- www.lg.com/b2b
- www.youtube.com/c/LGCommercialDisplay
- www.facebook.com/LGInformationDisplay
- www.linkedin.com/company/LGInformationDisplay

LG may make changes to specifications and product descriptions without notice.
Copyright © 2018 LG Electronics Inc. All rights reserved. "LG Life's Good" is a registered trademark of LG Corp.
The names of products and brands mentioned here may be the trademarks of their respective owners.





The ideal partner, offering unrivaled technology for the hospitality industry

LG's commercial TVs featuring innovative technology, such as OLED and IPS, deliver a new level of experience in hospitality. Our innovation continues to bring luxury to spaces thanks to ultra-slim designs, while adding value through revolutionary screen quality. As the ideal partner for the hospitality industry and constantly seeking to upscale its quality of service, LG commercial TV is the solution for hoteliers and their customers.

TV Signage (Smart TV Signage)

LIVE TV AND ADVERTISEMENTS ON ONE SCREEN

Smart TV Signage enables both TV broadcasting and promotional display in one screen via a built-in TV tuner. With Smart TV Signage, managers can efficiently and timely deliver messages / promotion while customers enjoy watching live TV simultaneously. Smart TV Signage will help you to achieve ease of efficient operation.



70" / 60" / 55" / 49" / 43"
UU640C

EU / CIS

55" / 49" / 43"
LV640S

EU / CIS



- Ultra HD
- Embedded CMS (Content Management, Group Management)
- SuperSign SW Compatibility (Control / Control +, Simple Editor)
- Crestron Connected® (Network Based Control)

- WOL (Wake On LAN), SNMP
- DPM (Display Power Management) Mode
- USB Data Cloning
- RTC (Real Time Clock), NTP (Network Time Protocol)



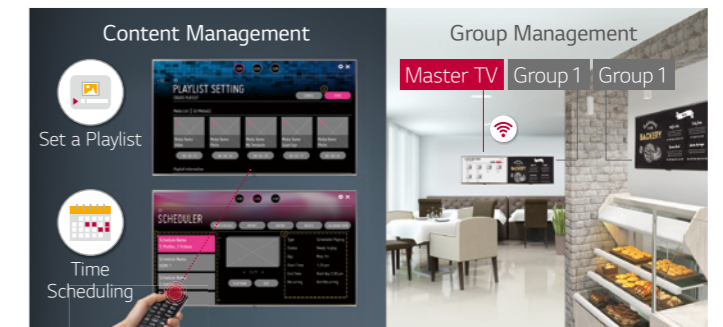
- Full HD
- Embedded CMS (Content Management, Group Management)
- SuperSign SW Compatibility (Control / Control +, Simple Editor)
- Crestron Connected® (Network Based Control)

- WOL (Wake On LAN), SNMP
- Media Share via Built-in WiFi
- RTC (Real Time Clock), NTP (Network Time Protocol)
- Pre-loaded YouTube App, Web Browser

Features

Embedded Content Management & Group Management

The embedded Content Management & Group Management System allows you to edit and play content, schedule a playlist and even group and control signages via remote control, mouse or even mobile phone, without needing a separate PC or software. This makes content management much easier and user-friendly.



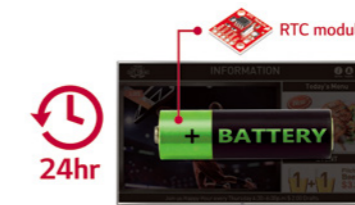
USB Data Cloning

USB data cloning makes managing multiple displays more efficient for optimal operation, since users don't have to set up each display one by one. Once users copy data to a USB in one display, it will be easily distributed to others through a USB plug-in.



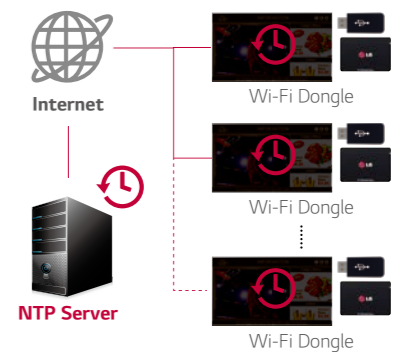
RTC

Save time and improve convenience with RTC (Real Time Clock). When the TV's power is off, time information is stored on the RTC module via an internal memory, and a time sync process can be omitted as the TV turns on.



NTP

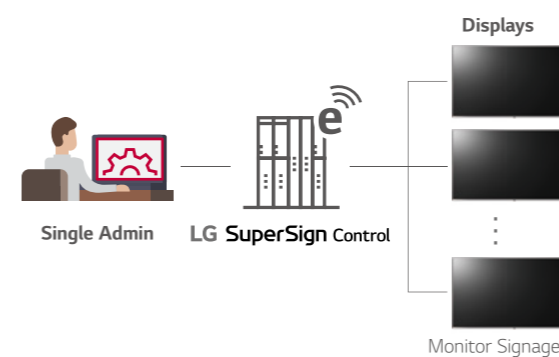
With NTP (Network Time Protocol), the TV receives real time updates from the network and synchronizes its time accordingly.



SuperSign Solutions

SuperSign Control

SuperSign Control is a basic control software. Up to 100 displays are controlled by one account with a single server. Essential factors such as power, volume, scheduling can be remotely adjusted, with firmware updates supported.



SuperSign CMS

SuperSign CMS is a content management software solution optimized for LG webOS signage. It supports multiple displays and accounts, is able to be linked to external databases, and allows server access from mobile devices.

