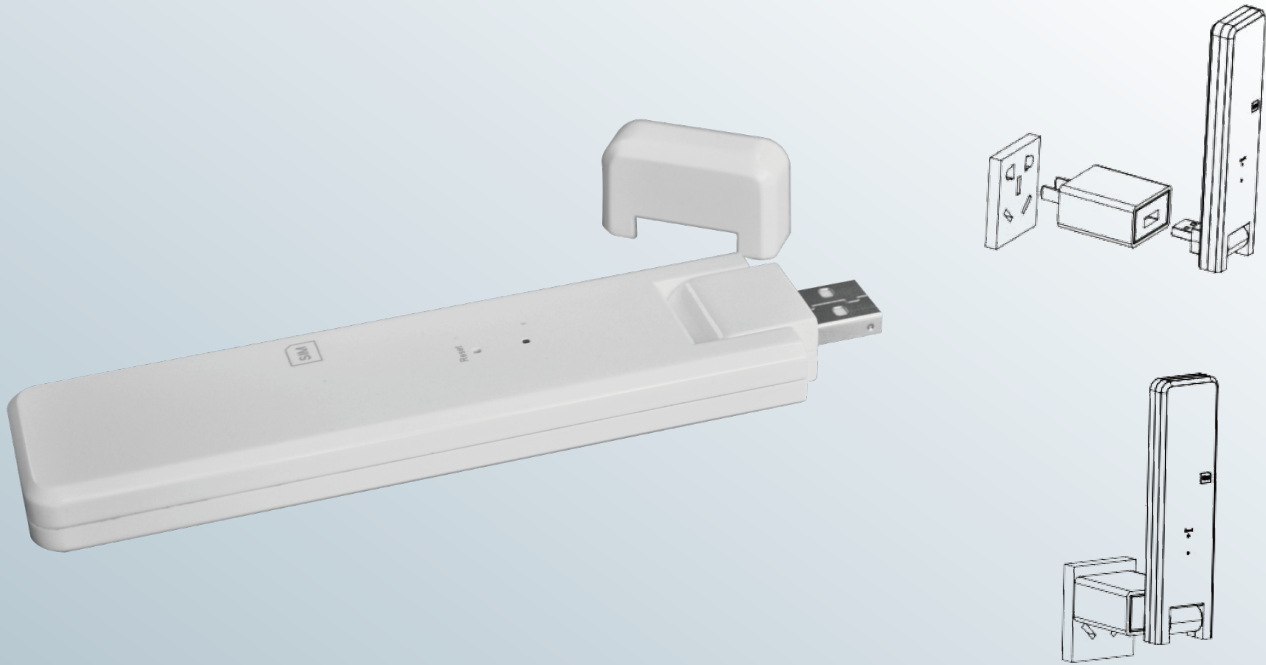


Monitor Device for Micro Inverter



Talent-MG2-WU/GU



Technical Data

Model	Talent-MG2-WU	Talent-MG2-GU
Communication to Microinverter		
Signal		2.4G RF
Maximum Distance(Open Space)		100m
Monitoring Data Limit		99 panels
Communication to Server		
Sample Rate		Per 15 minutes
Signal	WiFi(2.4GHz)	GSM(850/900/1800/1900MHz)
Power Supply		
Type		Adapter with USB port
Input Voltage/Frequency		100 to 240V AC / 50 or 60Hz
Output Voltage/Current		5V DC / 2A
Power Consumption		1.0W(typical), 5W(maximum)
Mechanical Data		
Ambient Temperature(°C)		-20~+55
Dimensions (W*H*D mm)		143*33*12.5
Weight (kg)		0.1
Mounting System		Plug-in
Indicator Light		LED



TSUNESS Co., Ltd

E-mail: sales@tsun-ess.com

Web: www.tsun-ess.com

Tel: +86-512-6618 6028

Add: Building E1, No. 555, Chuangye Road, Dayun Town,
Jiashan County, Jiaxing City, Zhejiang Province, China